

$$\text{slope} = \frac{\text{rise}}{\text{run}} = \frac{\Delta y}{\Delta x}$$

dependent variable (output)

independent variable (input)

$$y = mx + b$$

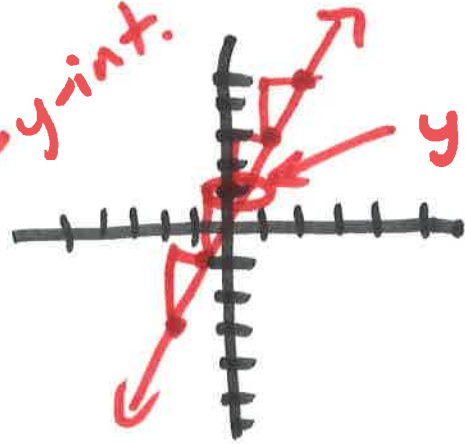
← y-intercept starting value

Slope  
rate of change  
coefficient

ex:  $y = 2x + 1$

x	y
-2	-3
-1	-1
0	1
1	3
2	5

+1, +1, +1, +1, +1 (vertical changes)  
+2, +2, +2, +2, +2 (horizontal changes)



$$m = \frac{+2}{+1} = 2$$